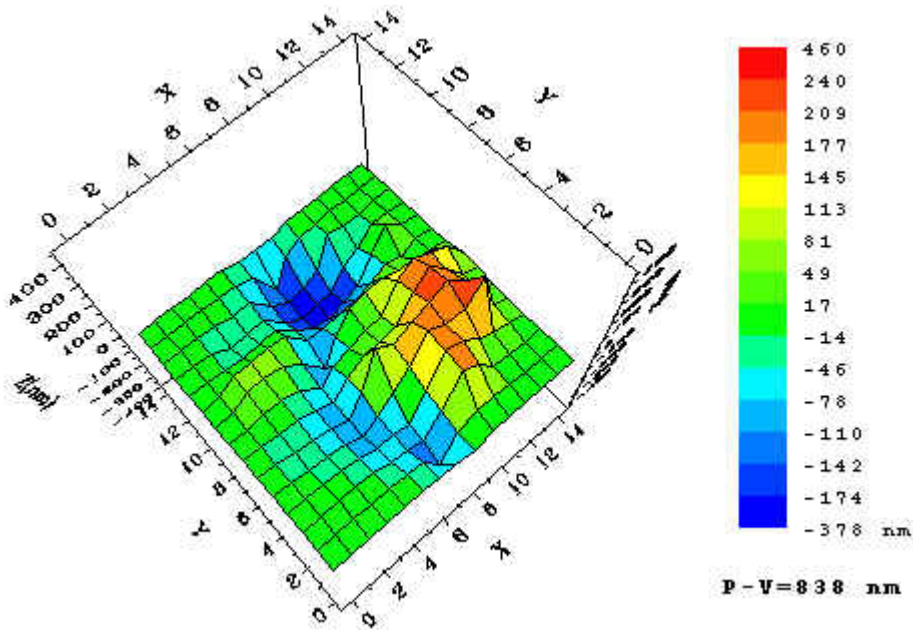
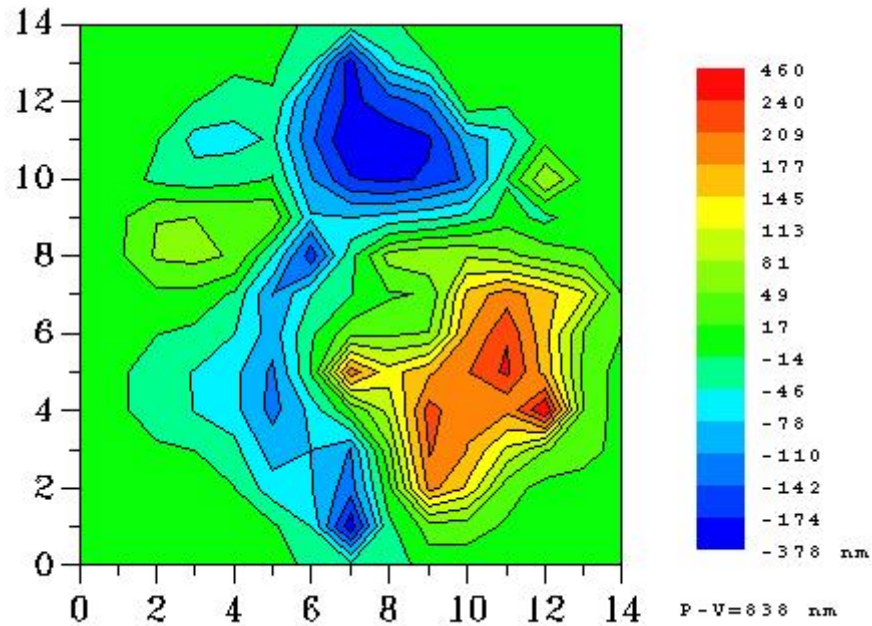


Shack-Hartmann analysis of the human eye



The map of the wavefront of the human eye as found by our Shack-Hartmann software package Sensoft, only for astigmatism. The coefficient as computed from Sensoft had an angle of -10 degrees, which is consistent with the angle from the figures (the angle of the peak, or the red area). These are just the initial results. More results will follow soon.